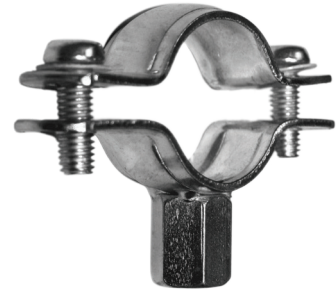




# Pipe Clamp

## Model: SD-GE-PPC

- Designed for horizontal, vertical and suspended installations.
- Welded Nut M8/M10 with option of M10/M12
- High - Strength round welded connection nuts.
- The two locking screws allow adjustment.
- Can be used as a pipe anchor point.
- Suitable for installations without vibration control requirements.

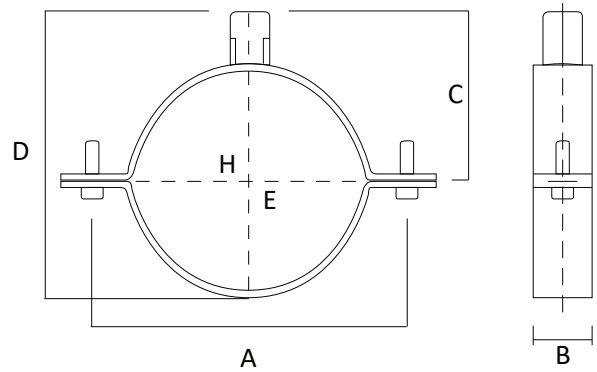


## Product Specifications:

Available Size	3/8" - 12"
Material	Mild Steel
Standards	ASTM B633
Application	Water, HVAC & Fire-Fighting
Coating Finish	Electro-Galvanized as per ASTM B633 Standards
Approvals/Listings	<p>Federal Specification WW-H-171E &amp; A-A-1192 (Type 25)                      Manufacturers Standardization Society ANSI/MSS SP-69 &amp; SP-58 (Type 12)                      UL Listed &amp; FM Approved</p> <div style="display: flex; justify-content: space-around; align-items: center;"> <div style="text-align: center;">  <p><b>UL</b> LISTED</p> </div> <div style="text-align: center;">  <p><b>FM</b> APPROVED</p> </div> </div>

# Pipe Clamp

## Product Dimensions:



Size	Pipe O.D	Dimensions						Max. Load
		H mm	E mm	A mm	B mm	C mm	D mm	
Inch	mm							Kg
3/8	17.1	15	19	59	20	23	30	450
1/2	21.3	20	25	66	20	26	37	450
3/4	26.7	26	30	72	20	29	43	450
1	33.4	32	36	79	20	33	50	450
1 1/4	42.2	38	43	86	20	36	57	450
1 1/2	48.3	47	51	92	20	39	63	450
1 1/2-54	54.0	53	58	98	20	42	69	450
2	60.3	60	64	104	20	45	75	450
2-63	63.0	63	66	108	20	47	72	450
2-70	70.0	68	72	114	20	50	85	450
2 1/2	73.0	74	80	119	20	53	90	600
2 1/2-83	83.0	81	86	127	20	57	98	600
3	88.9	87	92	134	20	60	105	600
3 1/2	101.6	99	105	144	20	65	115	600
3 1/2-110	110.0	107	112	164	20	70	125	600
4	114.3	113	118	159	20	73	130	600
4-125	125.0	125	130	169	20	78	140	600
4-133	133.0	131	137	177	20	82	148	600
5	141.3	138	142	184	20	85	155	600
5-150	150.0	148	153	194	20	90	165	600
5-160	160.0	159	166	204	25	95	175	600
6	168.3	168	172	212	25	99	183	600
6-210	210.0	200	212	244	25	115	215	950
8	219.1	215	220	264	25	125	235	950
10	273.0	269	274	294	25	140	265	950
12	323.8	313	318	367	25	177	339	1200

Note:  
 • Measurements are subject to 5% tolerance.  
 • Other Sizes available on request.  
 • Hot Dipped Galvanized can be supplied upon request.

# Pipe Clamp

## Miscellaneous Data:

### 1. Ordering Information

Example: SD-GE-PPC-1-4

- SD-GE-PPC is the part number
- (1) Electro-Galvanized Coating
- (4) Size

### 2. Contact Information

For further information on any aspect of the SHIELD Pipe Supports please contact below:

MIDDLE EAST & AFRICA	UNITED KINGDOM
Jebel Ali Free Zone, Dubai, UAE P.O Box: 61199 Tel.: +971 4 881 2070 Fax: +971 4 881 2198 Email: shieldme@shielglobal.com	Unit 3, Endeavor Drive, Basildon-Essex, SS3 14WF Tel.: +44 1708 377731 Fax: +44 1708347637 Email: shielduk@shielglobal.com