




# Grooved Reducing Tee

## Model: SDG-53

SHIELD SDG-53 allow controlled angular and linear movement of the pipe to assist alignment and installation. The advantage of flexibility must be considered in the design for hanger and support spacing.

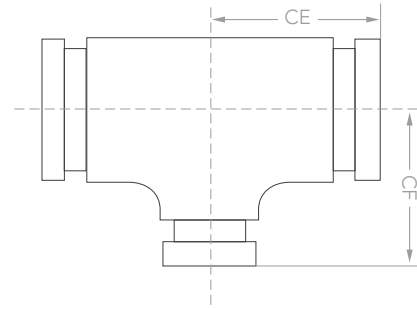


## Product Specifications:

Available Size	1" - 24"
Material	Ductile Iron to ASTM A536 Grade 65-45-12
Max. Working Pressure	500psi
Application	Water, HVAC & Fire-Fighting
Coating Finish	Red Painted, Hot Dipped Galvanized
Bolts & Nuts	Carbon Steel ISO 898-1 Class 8.8 heat treated, Hot Dipped Galvanized Nuts & Bolts
Gasket	EPDM Rubber C Shaped Gasket conforms to ASTM D2000-1, Grade A
Lubricants	Use silicon based non-petroleum lubricants on the lips and outside back
Approvals/Listings	  

# Grooved Reducing Tee

## Product Dimensions:



SDG-53  
Reducing Tee

Nominal Size	Pipe O.D.	Max. Working Pressure	Dimensions	
			CE mm	CF mm
Inch	mm	psi		
2 x 1	60.3 x 33.7	500	70.0	70.0
2 x 1½	60.3 x 48.3	500	70.0	70.0
2½ x 1½	73.0 x 48.3	500	76.0	76.0
2½ x 2	73.0 x 60.3	500	69.0	76.0
3 O.D. x 1¼	76.1 x 42.4	500	76.0	76.0
3 O.D. x 1½	76.1 x 48.3	500	76.0	76.0
3 O.D. x 2	76.1 x 60.3	500	69.0	76.0
3 x 1	88.9 x 33.7	500	108.0	108.0
3 x 1¼	88.9 x 42.4	500	85.5	85.5
3 x 1½	88.9 x 48.3	500	85.5	85.5
3 x 2	88.9 x 60.3	500	85.5	85.5
3 x 2½	88.9 x 73.0	500	85.5	85.5
3 x 3 O.D.	88.9 x 76.1	500	85.5	85.5
4¼ O.D. x 2	108.0 x 60.3	500	101.0	101.0
4¼ O.D. x 3	108.0 x 88.9	500	101.0	101.0
4 x 1	114.3 x 33.7	500	101.0	101.0
4 x 1½	114.3 x 48.3	500	101.0	101.0
4 x 2	114.3 x 60.3	500	101.0	101.0
4 x 2½	114.3 x 73.0	500	101.0	101.0
4 x 3 O.D.	114.3 x 76.1	500	101.0	101.0
4 x 3	114.3 x 88.9	500	101.0	101.0
5¼ O.D. x 2	133.0 x 60.3	500	124.0	124.0
5¼ O.D. x 3 O.D.	133.0 x 76.1	500	124.0	124.0
5¼ O.D. x 4¼ O.D.	133.0 x 108.0	500	124.0	124.0
5¼ O.D. x 4	133.0 x 114.3	500	124.0	124.0
5½ O.D. x 1½	139.7 x 48.3	500	124.0	124.0
5½ O.D. x 2	139.7 x 60.3	500	124.0	124.0
5½ O.D. x 3 O.D.	139.7 x 76.1	500	124.0	124.0

Nominal Size	Pipe O.D.	Max. Working Pressure	Dimensions	
			CE mm	CF mm
Inch	mm	psi		
5½ O.D. x 3	139.7 x 88.9	500	124.0	124.0
5½ O.D. x 4	139.7 x 114.3	500	124.0	124.0
5 x 2	141.3 x 60.3	500	124.0	124.0
5 x 3	141.3 x 88.9	500	124.0	124.0
5 x 4	141.3 x 114.3	500	124.0	124.0
6¼ O.D. x 2	159.0 x 60.3	500	140.0	140.0
6¼ O.D. x 3 O.D.	159.0 x 76.1	500	140.0	140.0
6¼ O.D. x 3	159.0 x 88.9	500	140.0	140.0
6¼ O.D. x 4¼ O.D.	159.0 x 108.0	500	140.0	140.0
6¼ O.D. x 4	159.0 x 114.3	500	140.0	140.0
6¼ O.D. x 5¼ O.D.	159.0 x 133.0	500	140.0	140.0
6½ O.D. x 2	165.1 x 60.3	300	140.0	140.0
6½ O.D. x 3 O.D.	165.1 x 76.1	300	140.0	140.0
6½ O.D. x 3	165.1 x 88.9	300	140.0	140.0
6½ O.D. x 4	165.1 x 114.3	300	140.0	140.0
6½ O.D. x 5¼ O.D.	165.1 x 133.0	300	140.0	140.0
6½ O.D. x 5½ O.D.	165.1 x 139.7	300	140.0	140.0
6 x 2	168.3 x 60.3	500	140.0	140.0
6 x 2½	168.3 x 73.0	500	140.0	140.0
6 x 3 O.D.	168.3 x 76.1	500	140.0	140.0
6 x 3	168.3 x 88.9	500	140.0	140.0
6 x 4	168.3 x 114.3	500	140.0	140.0
6 x 5½ O.D.	168.3 x 139.7	300	140.0	140.0
6 x 5	168.3 x 141.3	300	140.0	140.0
x 4	216.3 x 114.3	300	175.0	175.0
x 6½ O.D.	216.3 x 165.1	300	175.0	175.0
8 x 2	219.1 x 60.3	500	175.0	175.0
8 x 3 O.D.	219.1 x 76.1	300	175.0	175.0

# Grooved Reducing Tee

## Product Dimensions:

Nominal Size	Pipe O.D.	Max. Working Pressure	Dimensions	
			CE mm	CF mm
Inch	mm	psi		
8 x 3	219.1 x 88.9	500	175.0	175.0
8 x 4 1/4 O.D.	219.1 x 108.0	500	175.0	175.0
8 x 4	219.1 x 114.3	500	175.0	175.0
8 x 5 1/4 O.D.	219.1 x 133.0	300	175.0	175.0
8 x 5 1/2 O.D.	219.1 x 139.7	300	175.0	175.0
8 x 6 1/4 O.D.	219.1 x 159.0	300	175.0	175.0
8 x 6 1/2 O.D.	219.1 x 165.1	300	175.0	175.0
8 x 6	219.1 x 168.3	500	175.0	175.0
10 x 6 1/4 O.D.	273.0 x 159.0	500	229.0	229.0
10 x 6 1/2 O.D.	273.0 x 165.1	300	229.0	229.0
10 x 6	273.0 x 168.3	300	229.0	229.0
10 x 8	273.0 x 219.1	300	229.0	229.0
12 x 6	323.9 x 168.3	300	254.0	254.0
12 x 8	323.9 x 219.1	300	254.0	254.0
12 x 10	323.9 x 273.0	300	254.0	254.0
18 x 12	480.0 x 323.9	300	335.0	335.0
18 x 14	480.0 x 377.0	300	335.0	335.0
14 x 6	355.6 x 168.3	300	279.0	238.0
14 x 8	355.6 x 219.1	300	280.0	280.0
14 x 10	355.6 x 273.0	300	279.0	257.0
14 x 12	355.6 x 323.9	300	279.0	270.0
x 5 1/4 O.D.	377.0 x 133.0	300	240.0	265.0
x 6 1/4 O.D.	377.0 x 159.0	300	240.0	265.0
x 8	377.0 x 219.1	300	240.0	265.0
x 10	377.0 x 273.0	300	240.0	265.0
x 12	377.0 x 323.9	300	240.0	265.0
16 x 6	406.4 x 168.3	300	305.0	264.0
16 x 8	406.4 x 219.1	300	305.0	273.0
16 x 10	406.4 x 273.0	300	305.0	283.0
16 x 12	406.4 x 323.9	300	305.0	295.0
16 x 14	406.4 x 355.6	300	305.0	305.0
16 x 5 1/4 O.D.	426.0 x 133.0	300	260.0	285.0
16 x 6 1/4 O.D.	426.0 x 159.0	300	260.0	285.0
16 x 8	426.0 x 219.1	300	260.0	285.0

Nominal Size	Pipe O.D.	Max. Working Pressure	Dimensions	
			CE mm	CF mm
Inch	mm	psi		
16 x 10	426.0 x 273.0	300	260.0	285.0
16 x 12	426.0 x 323.9	300	260.0	285.0
18 x 6	457.2 x 168.3	300	343.0	298.0
18 x 8	457.2 x 219.1	300	343.0	298.0
18 x 10	457.2 x 273.0	300	343.0	308.0
18 x 12	457.2 x 323.9	300	343.0	321.0
18 x 14	457.2 x 355.6	300	343.0	330.0
18 x 16	457.2 x 406.4	300	343.0	330.0
20 x 6	508.0 x 168.3	300	381.0	324.0
20 x 8	508.0 x 219.1	300	381.0	324.0
20 x 10	508.0 x 273.0	300	381.0	333.0
20 x 12	508.0 x 323.9	300	381.0	346.0
20 x 14	508.0 x 355.6	300	381.0	356.0
20 x 16	508.0 x 406.4	300	381.0	356.0
20 x 18	508.0 x 457.2	300	381.0	368.0
24 x 6	609.6 x 168.3	300	432.0	384.0
24 x 8	609.6 x 219.1	300	432.0	384.0
24 x 10	609.6 x 273.0	300	432.0	384.0
24 x 12	609.6 x 323.9	300	432.0	397.0
24 x 14	609.6 x 355.6	300	432.0	406.0
24 x 16	609.6 x 406.4	300	432.0	406.0
24 x 18	609.6 x 457.2	300	432.0	419.0
24 x 20	609.6 x 508.0	300	432.0	432.0

# Grooved Reducing Tee

## Miscellaneous Data:

### 1. Ordering Information

Example: SDG53-1-1-4

- SDG53 is the part number
- (1) Red Painted Coating (2) Hot Dipped Galvanized Coating
- (1) Carbon Steel bolts/nuts (2) Hot Dipped Galvanized bolts/nuts
- (4) Size

### 2. Contact Information

For further information on any aspect of the SHIELD Grooved Fittings please contact below:

MIDDLE EAST & AFRICA	UNITED KINGDOM
Jebel Ali Free Zone, Dubai, UAE P.O Box: 61199 Tel.: +971 4 881 2070 Fax: +971 4 881 2198 Email: shieldme@shielglobal.com	Unit 3, Endeavor Drive, Basildon-Essex, SS3 14WF Tel.: +44 1708 377731 Fax: +44 1708347637 Email: shielduk@shielglobal.com