




Grooved Elbow 90°

Model: SDG-100 Long Radius

SHIELD SDG-100 is designed for maximum working pressure of 500psi. The flexibility benefits of this coupling can be used in applications where high pressure is not required.

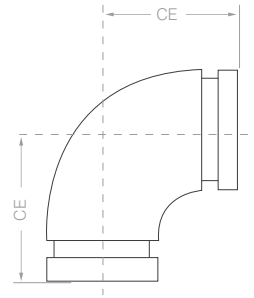


Product Specifications:

Available Size	1" - 24"
Material	Ductile Iron to ASTM A536 Grade 65-45-12
Max. Working Pressure	500psi
Application	Water, HVAC & Fire-Fighting
Coating Finish	Red Painted, Hot Dipped Galvanized
Bolts & Nuts	Carbon Steel ISO 898-1 Class 8.8 heat treated, Hot Dipped Galvanized Nuts & Bolts
Gasket	EPDM Rubber C Shaped Gasket conforms to ASTM D2000-1, Grade A
Lubricants	Use silicon based non-petroleum lubricants on the lips and outside back
Approvals/Listings	  

Grooved Elbow 90°

Product Dimensions:



SDG-100
90° Long Radius Elbow

Nominal Size	Pipe O.D.	90° Elbow	
Inch	mm	Maximum Working Pressure psi	CE mm
1	33.7	500	57.0
1¼	42.4	500	70.0
1½	48.3	500	70.0
2	60.3	500	82.5
2½	73.0	500	95.0
3 O.D.	76.1	500	95.0
3	88.9	500	108.0
4¼ O.D.	108.0	-	-
4	114.3	500	127.0
5¼ O.D.	133.0	500	122.0
5½ O.D.	139.7	500	140.0
5	141.3	500	140.0
6¼ O.D.	159.0	-	-
6½ O.D.	165.1	500	165.0

Nominal Size	Pipe O.D.	90° Elbow	
Inch	mm	Maximum Working Pressure psi	CE mm
6	168.3	500	165.0
-	216.3	-	-
8	219.1	500	197.0
-	267.4	300	229.0
10	273.0	300	229.0
-	318.5	300	254.0
12	323.9	300	254.0
14	355.6	300	280.0
-	377.0	300	279.0
16	406.4	300	305.0
-	426.0	300	305.0
18	457.2	300	394.0
-	480.0	300	335.0
20	508.0	300	438.0
24	609.6	300	508.0

Grooved Elbow 90°

Miscellaneous Data:

1. Ordering Information

Example: SDG100-1-2-4

- SDG100 is the part number
- (1) Red Painted Coating (2) Hot Dipped Galvanized Coating
- (1) Carbon Steel bolts & nuts (2) Hot Dipped Galvanized bolts & nuts
- (4) Size

2. Contact Information

For further information on any aspect of the SHIELD Grooved Fittings please contact below:

MIDDLE EAST & AFRICA	UNITED KINGDOM
Jebel Ali Free Zone, Dubai, UAE P.O Box: 61199 Tel.: +971 4 881 2070 Fax: +971 4 881 2198 Email: shieldme@shielglobal.com	Unit 3, Endeavor Drive, Basildon-Essex, SS3 14WF Tel.: +44 1708 377731 Fax: +44 1708347637 Email: shielduk@shielglobal.com