

Flanges Blind Flange

Model: SD-BF

The blind flange is manufactured using a bore (a round steel plate) with appropriate bolt holes. It is a highly stressed flange, however, most of the stresses are near the centre. It is suitable for high pressure applications. Blind flange is commonly used to close off end for piping system and pressure vessel openings.

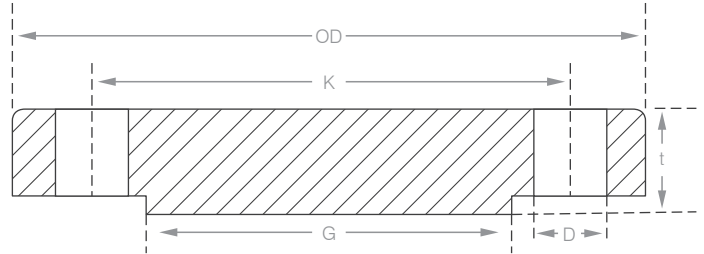


Product Specifications:

Available Size	1/2" - 24"
Material	ASTM A105, Carbon Steel
Dimension Standard	ASME B16.5, Class 150/300, BS 4504, BS EN 1092-1 (PN10, PN16, PN25)
Application	HVAC & Chilled Water
Coating Finish	Black
Face Type	Raised Face, Flat Face, Ring Type Joint Face

Flanges Blind Flange

Product Dimensions:



SD-BF150, SD-BF300

Nominal Pipe Size	Outer Diameter	Thickness (Min)	Raised Face	No. of Holes	PCD	Dia. of Bolt holes	Suitable bolt dia.
DN Inch	OD mm	t mm	G mm		K mm	D Inch	Inch
1/2	90	11.2	34.9	4	60.3	5/8	1/2
3/4	100	12.7	42.9	4	69.9	5/8	1/2
1	110	14.3	50.8	4	79.4	5/8	1/2
1 1/4	115	15.9	63.5	4	88.9	5/8	1/2
1 1/2	125	17.5	73.0	4	98.4	5/8	1/2
2	150	19.1	92.1	4	120.7	3/4	5/8
2 1/2	180	22.3	104.8	4	139.7	3/4	5/8
3	190	23.9	127.0	4	152.4	3/4	5/8
3 1/2	215	23.9	139.7	8	177.8	3/4	5/8
4	230	23.9	157.2	8	190.5	3/4	5/8
5	255	23.9	185.7	8	215.9	7/8	3/4
6	280	25.4	215.9	8	241.3	7/8	3/4
8	345	28.6	269.9	8	298.5	7/8	3/4
10	405	30.2	323.8	12	362.0	1	7/8
12	485	31.8	381.0	12	431.8	1	7/8
14	535	35.0	412.8	12	476.3	1 1/8	1
16	595	36.6	469.9	16	539.8	1 1/8	1
18	635	39.7	533.4	16	577.9	1 1/4	1 1/8
20	700	42.9	584.2	20	635.0	1 1/4	1 1/8
24	815	47.7	692.2	20	749.3	1 3/8	1 1/4

Flanges Blind Flange

Product Dimensions:

SD-BF10

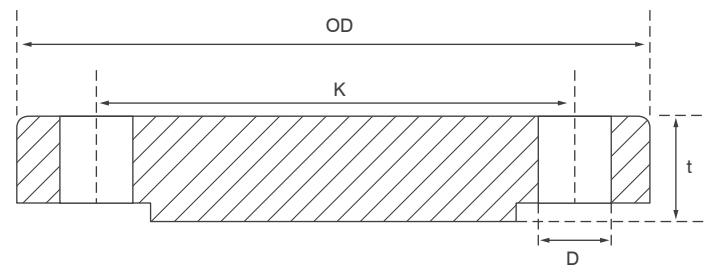
Nominal Size		Outer Dia. OD mm	PCD K mm	Thickness t mm	No. of Holes mm	Hole Dia. D mm	Suitable Thread mm
Inch	mm						
1/2	15	95	65	16	4	14	M12
3/4	20	105	75	18	4	14	M12
1	25	115	85	18	4	14	M12
1 1/4	32	140	100	18	4	18	M16
1 1/2	40	150	110	18	4	18	M16
2	50	165	125	20	4	18	M16
2 1/2	65	185	145	20	4	18	M16
3	80	200	160	20	8	18	M16
4	100	220	180	22	8	18	M16
5	125	250	210	22	8	18	M16
6	150	285	240	24	8	22	M20
8	200	340	295	24	8	22	M20
10	250	395	350	26	12	22	M20
12	300	445	400	26	12	22	M20
14	350	505	460	26	16	22	M20
16	400	565	515	26	16	26	M24
18	450	615	565	28	20	26	M24
20	500	670	620	28	20	26	M24
24	600	780	725	34	20	30	M27

SD-BF25

Nominal Size		Outer Dia. OD mm	PCD K mm	Thickness t mm	No. of Holes mm	Hole Dia. D mm	Suitable Thread mm
Inch	mm						
1/2	15	95	65	16	4	14	M12
3/4	20	105	75	18	4	14	M12
1	25	115	85	18	4	14	M12
1 1/4	32	140	100	18	4	18	M16
1 1/2	40	150	110	18	4	18	M16
2	50	165	125	20	4	18	M16
2 1/2	65	185	145	22	8	18	M16
3	80	200	160	24	8	18	M16
4	100	235	190	24	8	22	M20
5	125	270	220	26	8	26	M24
6	150	300	250	28	8	26	M24
8	200	360	310	30	12	26	M24
10	250	425	370	32	12	30	M27
12	300	485	430	34	16	30	M27
14	350	555	490	38	16	33	M30
16	400	620	550	40	16	36	M33
18	450	670	600	50	20	36	M33
20	500	730	660	51	20	36	M33
24	600	845	770	66	20	39	M36

SD-BF16

Nominal Size		Outer Dia. OD mm	PCD K mm	Thickness t mm	No. of Holes mm	Hole Dia. D mm	Suitable Thread mm
Inch	mm						
1/2	15	95	65	16	4	14	M12
3/4	20	105	75	18	4	14	M12
1	25	115	85	18	4	14	M12
1 1/4	32	140	100	18	4	18	M16
1 1/2	40	150	110	18	4	18	M16
2	50	165	125	18	4	18	M16
2 1/2	65	185	145	18	4	18	M16
3	80	200	160	20	8	18	M16
4	100	220	180	20	8	18	M16
5	125	250	210	22	8	18	M16
6	150	285	240	22	8	22	M20
8	200	340	295	24	12	22	M20
10	250	405	355	26	12	26	M24
12	300	460	410	28	12	26	M24
14	350	520	470	30	16	26	M24
16	400	580	525	32	16	30	M27
18	450	640	585	40	20	30	M27
20	500	715	650	44	20	33	M30
24	600	840	770	54	20	36	M33



Flanges Blind Flange

Miscellaneous Data:

1. Ordering Information

Example: SD-BF-1-1-3

- SD-BF is the part number
- (1) Black
- (1) Class 150 (2) Class 300 (4) PN10 (5) PN16 (6) PN25
- (3) Size

2. Contact Information

For further information on any aspect of the SHIELD Butt-Welded Fittings please contact below:

MIDDLE EAST & AFRICA	UNITED KINGDOM
Jebel Ali Free Zone, Dubai, UAE P.O Box: 61199 Tel.: +971 4 881 2070 Fax: +971 4 881 2198 Email: shieldme@shielglobal.com	Unit 3, Endeavor Drive, Basildon-Essex, SS3 14WF Tel.: +44 1708 377731 Fax: +44 1708347637 Email: shielduk@shielglobal.com