

Butt-Welded Reducer Tee

Model: SD-BRT

The reducing tee are manufactured with the branch outlet smaller than the run to obtain the desired flow and pressure through the system.



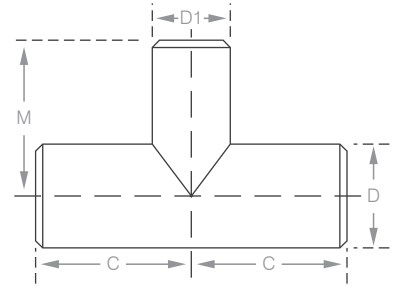
Product Specifications:

Available Size	1/2" - 34"
Material	ASTM A234 Grade WPB
Dimension Standard	ASME B16.9
Application	HVAC & Chilled Water
Coating Finish	Black
End Type	Beveled End, Raised Face

Butt-Welded Reducer Tee

Product Dimensions:

Nominal Pipe Size	Outside Diameter		Centre to End	
	D mm	D1 mm	C mm	M mm
1/2 x 1/4	21.3	13.7	25	25
1/2 x 3/8	21.3	17.3	25	25
3/4 x 3/8	26.7	17.3	29	29
3/4 x 1/2	26.7	21.3	29	29
1 x 1/2	33.4	21.3	38	38
1 x 3/4	33.4	26.7	38	38
1 1/4 x 1/2	42.2	21.3	48	48
1 1/4 x 3/4	42.2	26.7	48	48
1 1/4 x 1	42.2	33.4	48	48
1 1/2 x 1/2	48.3	21.3	57	57
1 1/2 x 3/4	48.3	26.7	57	57
1 1/2 x 1	48.3	33.4	57	57
1 1/2 x 1 1/4	48.3	42.2	57	57
2 x 3/4	60.3	26.7	64	44
2 x 1	60.3	33.4	64	51
2 x 1 1/4	60.3	42.2	64	57
2 x 1 1/2	60.3	48.3	64	60
2 1/2 x 1	73.0	33.4	76	57
2 1/2 x 1 1/4	73.0	42.2	76	64
2 1/2 x 1 1/2	73.0	48.3	76	67
2 1/2 x 2	73.0	60.3	76	70
3 x 1 1/4	88.9	42.2	86	70
3 x 1 1/2	88.9	48.3	86	73
3 x 2	88.9	60.3	86	76
3 x 2 1/2	88.9	73.0	86	83
3 1/2 x 1 1/2	101.6	48.3	95	79
3 1/2 x 2	101.6	60.3	95	83
3 1/2 x 2 1/2	101.6	73.0	95	89
3 1/2 x 3	101.6	88.9	95	92
4 x 1 1/2	114.3	48.3	105	86
4 x 2	114.3	60.3	105	89
4 x 2 1/2	114.3	73.0	105	95
4 x 3	114.3	88.9	105	98
4 x 3 1/2	114.3	101.6	105	102
5 x 2	141.3	60.3	124	105
5 x 2 1/2	141.3	73.0	124	108
5 x 3	141.3	88.9	124	111
5 x 3 1/2	141.3	101.6	124	114
5 x 4	141.3	114.3	124	117
6 x 2 1/2	168.3	73.0	143	121



Reducer Tee

Butt-Welded Reducer Tee

Product Dimensions:

Nominal Pipe Size	Outside Diameter		Centre to End		
	Inch	D mm	D1 mm	C mm	M mm
6 x 3		168.3	88.9	143	124
6 x 3½		168.3	101.6	143	127
6 x 4		168.3	114.3	143	130
6 x 5		168.3	141.3	143	137
8 x 3½		219.1	101.6	178	152
8 x 4		219.1	114.3	178	156
8 x 5		219.1	141.3	178	162
8 x 6		219.1	168.3	178	168
10 x 4		273.0	114.3	216	184
10 x 5		273.0	141.3	216	191
10 x 6		273.0	168.3	216	194
10 x 8		273.0	219.1	216	203
12 x 5		323.8	141.3	254	216
12 x 6		323.8	168.3	254	219
12 x 8		323.8	219.1	254	229
12 x 10		323.8	273.0	254	241
14 x 6		355.6	168.3	279	238
14 x 8		355.6	219.1	279	248
14 x 10		355.6	273.0	279	257
14 x 12		355.6	323.8	279	270
16 x 6		406.4	168.3	305	264
16 x 8		406.4	219.1	305	273
16 x 10		406.4	273.0	305	283
16 x 12		406.4	323.8	305	295
16 x 14		406.4	355.6	305	305
18 x 8		457.0	219.1	343	298
18 x 10		457.0	273.0	343	308
18 x 12		457.0	323.8	343	321
18 x 14		457.0	355.6	343	330
18 x 16		457.0	406.4	343	330
20 x 8		508.0	219.1	381	324
20 x 10		508.0	273.0	381	333
20 x 12		508.0	323.8	381	346
20 x 14		508.0	355.6	381	356
20 x 16		508.0	406.4	381	356
20 x 18		508.0	457.0	381	368
22 x 10		559.0	273.0	419	359
22 x 12		559.0	323.8	419	371
22 x 14		559.0	355.6	419	381
22 x 16		559.0	406.4	419	381
22 x 18		559.0	457.0	419	394
22 x 20		559.0	508.0	419	406
24 x 10		610.0	273.0	432	384
24 x 12		610.0	323.8	432	397
24 x 14		610.0	355.6	432	406
24 x 16		610.0	406.4	432	406

Butt-Welded Reducer Tee

Product Dimensions:

Nominal Pipe Size	Outside Diameter		Centre to End	
	D mm	D1 mm	C mm	M mm
24 x 18	610.0	457.0	432	419
24 x 20	610.0	508.0	432	432
24 x 22	610.0	559.0	432	432
26 x 12	660.0	323.8	495	422
26 x 14	660.0	355.6	495	432
26 x 16	660.0	406.4	495	432
26 x 18	660.0	457.0	495	444
26 x 20	660.0	508.0	495	457
26 x 22	660.0	559.0	495	470
26 x 24	660.0	610.0	495	483
28 x 12	711.0	323.8	521	448
28 x 14	711.0	355.6	521	457
28 x 16	711.0	406.4	521	457
28 x 18	711.0	457.0	521	470
28 x 20	711.0	508.0	521	483
28 x 22	711.0	559.0	521	495
28 x 24	711.0	610.0	521	508
28 x 26	711.0	660.0	521	521
30 x 10	762.0	273.0	559	460
30 x 12	762.0	323.8	559	473
30 x 14	762.0	355.6	559	483
30 x 16	762.0	406.4	559	483
30 x 18	762.0	457.0	559	495
30 x 20	762.0	508.0	559	508
30 x 22	762.0	559.0	559	521
30 x 24	762.0	610.0	559	533
30 x 26	762.0	660.0	559	546
30 x 28	762.0	711.0	559	546
32 x 14	813.0	355.6	597	508
32 x 16	813.0	406.4	597	508
32 x 18	813.0	457.0	597	521
32 x 20	813.0	508.0	597	533
32 x 22	813.0	559.0	597	546
32 x 24	813.0	610.0	597	559
32 x 26	813.0	660.0	597	572
32 x 28	813.0	711.0	597	572
32 x 30	813.0	762.0	597	584
34 x 16	864.0	406.4	635	533
34 x 18	864.0	457.0	635	546
34 x 20	864.0	508.0	635	559
34 x 22	864.0	559.0	635	572
34 x 24	864.0	610.0	635	584
34 x 26	864.0	660.0	635	597
34 x 28	864.0	711.0	635	597
34 x 30	864.0	762.0	635	610
34 x 32	864.0	813.0	635	622

Butt-Welded Reducer Tee

Miscellaneous Data:

1. Ordering Information

Example: SD-BRT-1-3

- SD-BRT is the part number
- (1) Black
- (3) Size

2. Contact Information

For further information on any aspect of the SHIELD Butt-Welded Fittings please contact below:

MIDDLE EAST & AFRICA	UNITED KINGDOM
Jebel Ali Free Zone, Dubai, UAE P.O Box: 61199 Tel.: +971 4 881 2070 Fax: +971 4 881 2198 Email: shieldme@shielglobal.com	Unit 3, Endeavor Drive, Basildon-Essex, SS3 14WF Tel.: +44 1708 377731 Fax: +44 1708347637 Email: shielduk@shielglobal.com